



S!M PATI[®]

**Smart. Proven.
Compatible.**

Strong performance, well engineered.

Simple operation for optimal processes.

SIMPATI® - increase your system efficiency!

weisstechnik presents the new version of the proven control software in a new design, with practice-oriented menu navigation and high-performance evaluation. **SIMPATI®** not only offers operating efficiency and performance, with **SIMPATI® online** it also offers a platform-based extension for the automatic generation of test reports - the ideal solution for your testing processes!

Full compatibility with Windows 10 makes **SIMPATI®** particularly future-proof. This is especially important for laboratories still using Windows 7, for which security updates will no longer be available from the beginning of 2020. **SIMPATI®** is suitable for all current **weisstechnik** devices and backward compatible to almost all models until 1987. In addition, systems from third-party suppliers can be integrated.

 **Windows 7:**
End of support Jan 2020

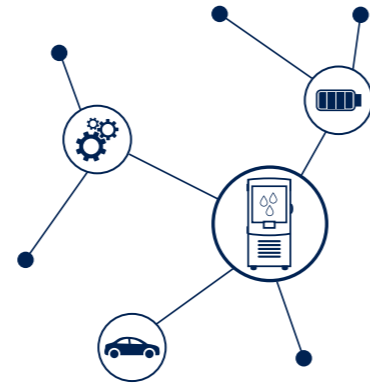


© a-image | shutterstock

Our highlights:

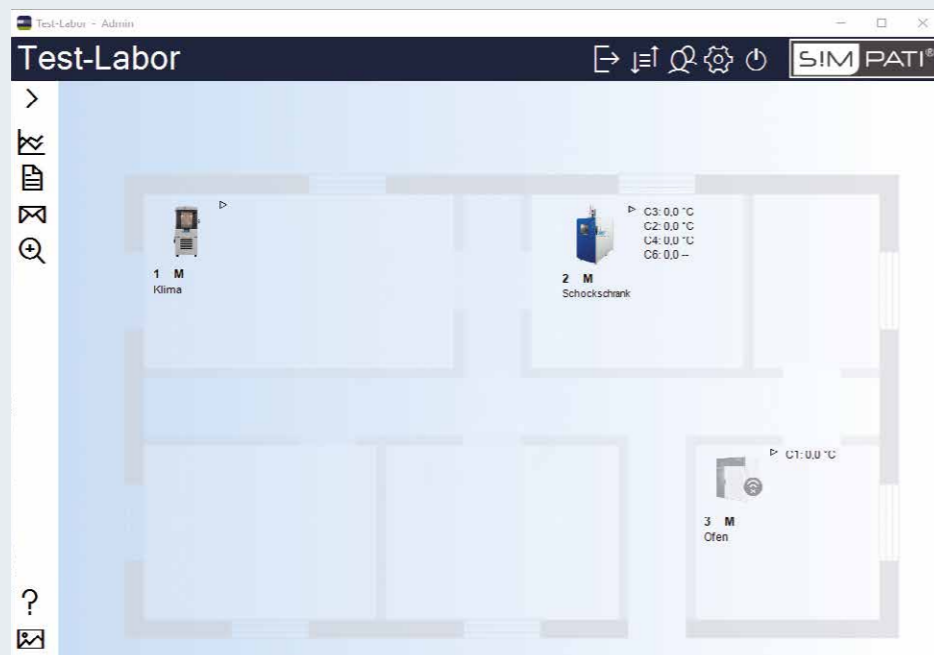
- Fast access to your evaluation data
- Simple remote control and monitoring of your testing systems
- Simplified and optimised user navigation
- Backward compatible until 1987

Comprehensive overview for fast access.



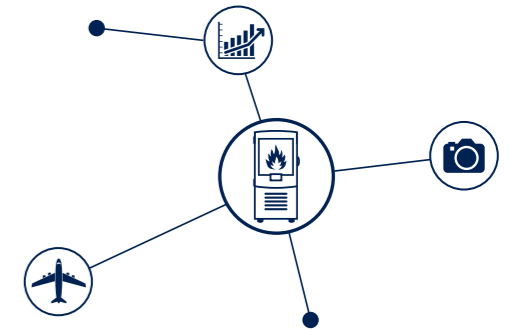
Your new menu navigation.

You reach all important functions quickly and easily via the clearly structured **SIMPATI®** menu with intuitive operation. In addition, a floor plan of your laboratory can be uploaded and the layout of all testing systems visualised for optimal handling. This means, you can control and program all test cabinets conveniently from one computer as well as evaluating their data. This effectively increases the efficiency of your systems and also provides protection against downtime.



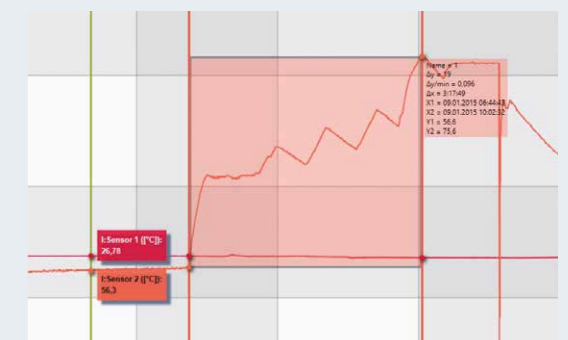
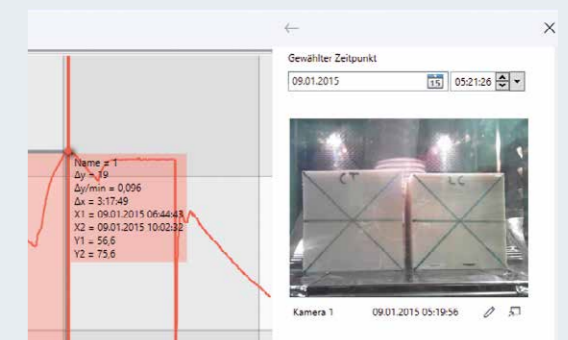
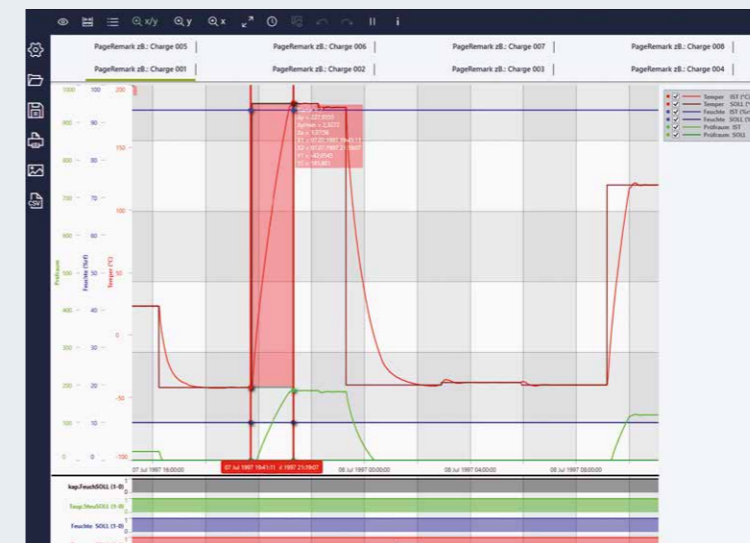
- Simple operation
- Visualisation via a building floor plan
- Central control, programming and evaluation of the chambers

Numerous possibilities for test results.



Your multifunctional evaluation.

SIMPATI® offers you almost unlimited possibilities for presentation, editing and evaluation of test results. Hereby, you benefit from an extremely simplified intuitive user navigation, especially for zooming and measuring of graphs or the optimised functions for CSV and image export. The performance ability of the software developed in-house by **weisstechnik** in cooperation with customers has been proved in complex tests with up to 10 million data points. Compatibility with the **SIMPATI® time labs** module enables you to integrate camera images quickly and easily within the evaluation.



- High software performance
- User-individually adjustable data display
- Comprehensive zoom, measuring and evaluation functions
- Visual evaluation of camera images with **SIMPATI® time labs**

Passionately innovative.

We work in partnership to support companies in research, development, production and quality assurance. With 22 companies in 15 countries at 40 locations.

weisstechnik

Test it. Heat it. Cool it.



Environmental Simulation

The first choice for engineers and researchers for innovative, safe environmental simulation facilities. In fast motion, our test systems can simulate all the influences in the world as well as for instance in space. In temperature, climate, corrosion, dust or combined stress tests. With a very high degree of reproducibility and precision.



Air Solutions

As the leading provider of clean rooms, climate technology and air dehumidification, we consistently ensure optimal climatic conditions for people and machines. For industrial production processes, in hospitals, mobile operation tents or in the field of information and telecommunications technology. From project planning to implementation.



Heat Technology

Experienced engineers and designers develop, plan and produce high-quality, reliable heat technology systems for a broad range of applications from heating and drying cabinets to microwave systems and industrial furnaces.



Pharmaceutical Technology

With decades of experience and know-how, we guarantee the most sophisticated clean air and containment solutions. Our comprehensive and innovative range of products includes barrier systems, laminar flow systems, safety workbenches, isolators, airlocks and stability test systems.

Weiss Umwelttechnik GmbH

Greizer Straße 41-49
35447 Reiskirchen/Germany
T +49 6408 84-0
info@weiss-technik.com
www.weiss-technik.com



Test it. Heat it. Cool it.



Management System
ISO 9001:2015

www.tuv.com
ID 9108624460



US-SIMPATI 4.70-01.1E/PP 1.0/01 2020

Illustrations may contain options.
Subject to technical changes.